

iGS60

USER MANUAL

SCIENTIFIC SPORTS & HEALTHY LIFE

qiwu TECHNOLOGY | www.igpsport.com
Wuhan Qiwu Technology Co., Ltd.

1. Standard Package includes

- iGS60 *1
- Micro USB Cable*1
- Bike Mount*2
- O-Rings*4
- User Manual *1
- Warranty Card*1

2. Buttons



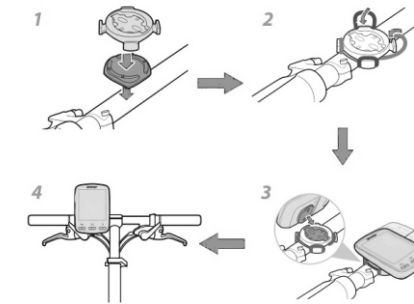
Left Button — Middle Button — Right Button

Button	Menu Mode		Ride Mode	
	Short-time press	Long-time press	Short-time press	Long-time press
Left	Back/Cancel	Power on/off Press over 10s to shutdown	Exit	Power on/off Press over 10s to shutdown
Middle	Confirm	--	Record/Pause (Lap)	--
Right	Down(next)	--	Switch Page	Turn on/off backlight

3. Icons

Icons	Description
	GPS off
	GPS no signal
	GPS weak signal
	GPS strong signal
	Heart Rate Sensor Connected
	Cadence Sensor Connected
	Speed Sensor Connected
	Power Sensor Connected
	Bluetooth Connected
	Battery 80%~100%
	Battery 60%~80%
	Battery 40%~60%
	Battery 20%~40%
	Battery 5%~20%
	Low Battery

4. How to install iGS60 on bike



5. GPS, Set time and Backlight

iGS60 built-in GPS.

When use GPS, please make sure be outdoor and with a clear view of the sky; Mostly device acquire satellite signals will be 30s~2 min for cold start, and 5s~45s for hot start.

Time Setting :

Time auto adjust when device acquire satellite signals, base on the location and time zone setting.

Smart Backlight :

Smart turn on/off backlight when sunrise and sunset.

6. Battery

iGS60 built-in rechargeable Li- Battery:

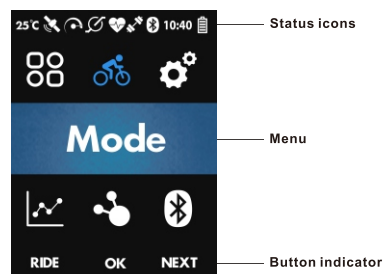
Temperature	Bluetooth	Backlight	Working time
25℃	On	off	20hours
25℃	On	50% time on	18hours
25℃	On	on	16hours

Working temperature: -10℃ to 50℃.

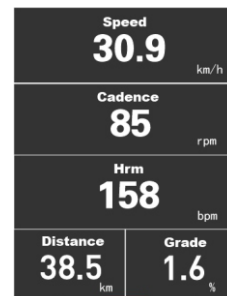
Attention:

- 1) Please use DC 5V adapter to charge;
- 2) Chargeable when iGS60 power on/off;
- 3) Please protect USB Plug from waterproof and dustproof.

7. Introduction of Main Page



8. Ride Mode



Single page display range 1 to 10 data, and each data is optional.

9. Connect ANT+ Sensors

iGS60 should search when using the ANT+ sensors at the first time.

Steps:

- 1) ANT+ sensors should be wake up (such as heart rate monitor be wore, or rotate pedal to wake up cadence sensor);
- 2) Enter ANT+ menu, search corresponding sensor;
- 3) When icon is on the screen, sensor is connected iGS60 will connect paired sensor automatically.

10. Upload data to computer and website

- 1) Power off iGS60;
- 2) iGS60 connect computer by micro USB cable, then press left button; iGS60 will be found in my computer as a USB device;
- 3) Copy :iGpsport\Activities*.fit files to computer except "List.fit";
- 4) Visit www.strava.com. and upload the *.fit files.

11. Connect App and upload data

iOS: Search igpsport in APP Store, download on your smart device

- 1) Turn on Bluetooth,
- 2) Open iGSPORT APP on smart device,
- 3) Search iGS60,
- 4) Upload data to App.

12. Contact us

Made in CHINA

Email: info@igpsport.com

Official website: www.igpsport.com

Manufacturer: Wuhan Qiwu Technology Co., Ltd

13. Specifications

Language: English/Chinese

GPS: GPS + Glonass

Screen: 2.2inch outdoor colorful screen, 240*320

Temperature: -10℃~50℃

Weight: 80g

Physical dimensions: 54×85×22mm

Antenna: Built-in

Water Proof: IPX6

Memory: More than 1000 hours riding data, 64MB

Data: Real time display: 10 data per page ;

Data format: .fit; can upload data to www.strava.com etc

Battery: Over 20 hours (without backlight) rechargeable lithium-ion

Pass-through: Standard Micro USB

Wireless: 2.4GHz/ANT+ (connect with speed sensor, cadence sensor, Heart Rate Monitor, Power Meter Sensor)BLE4.0 (connect with APP)

Barometric altimeter: Yes

Package include: iGS60, Micro USB Cable, Standard Bike mount

Accessories (Separately): Speed Sensor
Cadence Sensor
Heart Rate Monitor
Out-front bike mount